

DOC 8168 ED 6 2014 AMDT 8

- Aircraft taxiing independently on TWY H underneath short final RWY 35L.

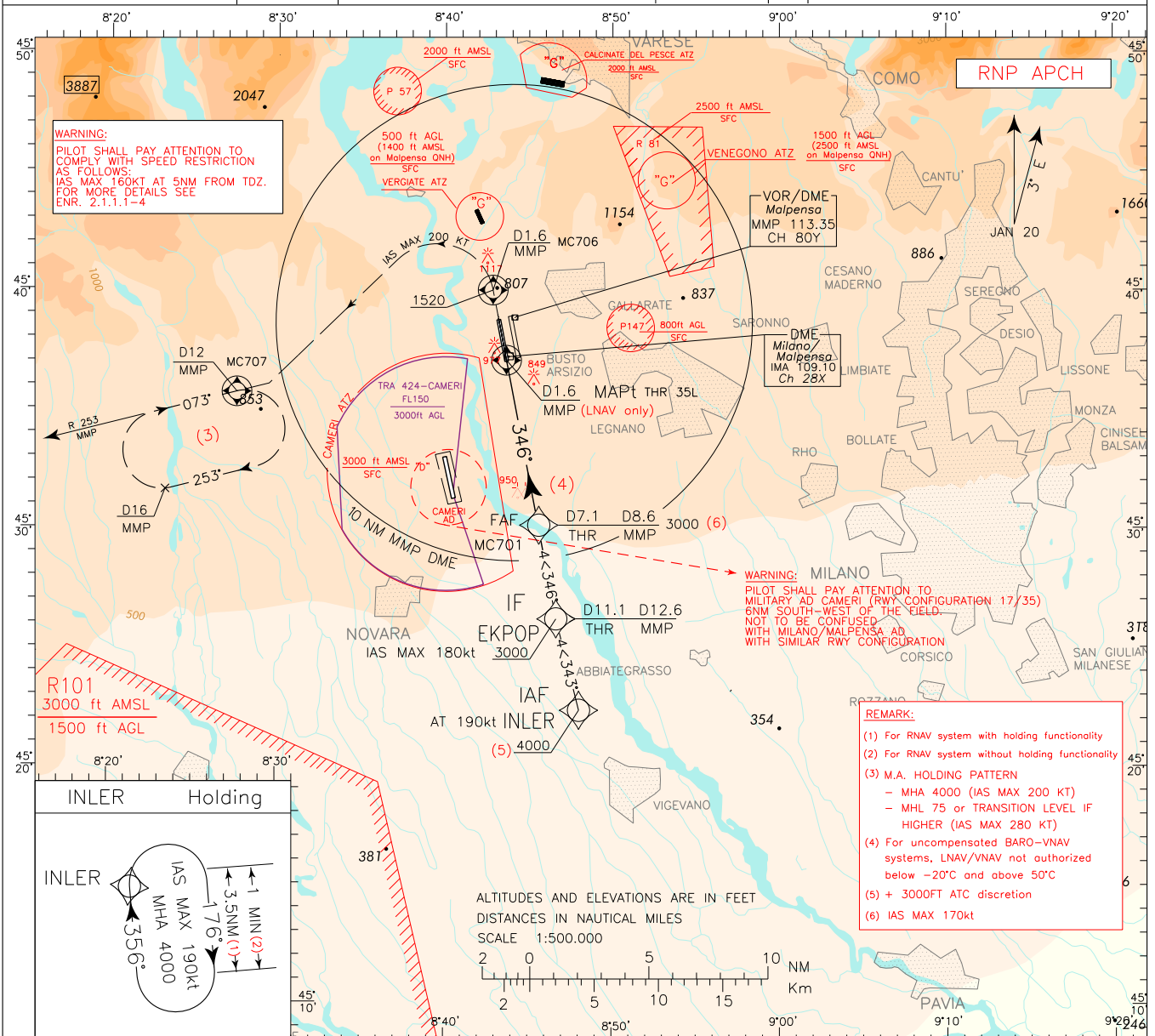
EGNOS	APP Milano Radar	CH 125.630 (CH 132.705)
CH 65551	TWR Malpensa TWR	128.350
E35E	ATIS Malpensa Arrival Information	120.025

AD ELEV
768

L
I
M
C

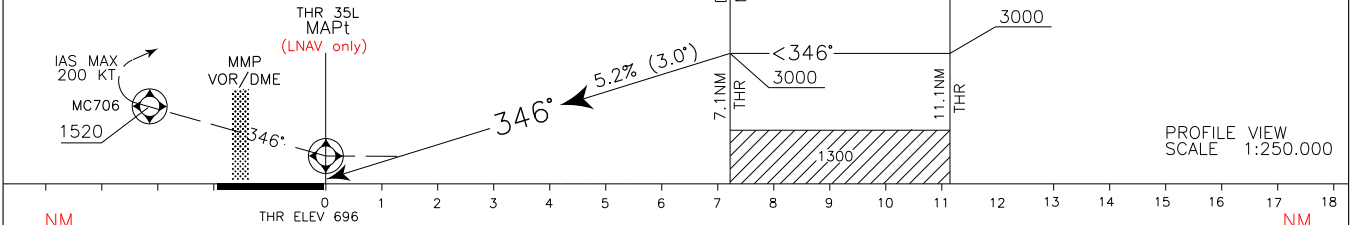
MILANO/ MALPENSA
RNP RWY 35L

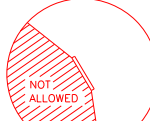
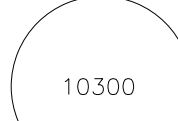
CHANGE: MAGNETIC VARIATION UPDATED



TRANSITION ALT 6000 MISSED APPROACH: Proceed on TR 346° climbing to 4000 ft. At MC706 (D1.6 MMP DME)(MCA 1520ft) turn left (IAS MAX 200kt) to join RDL 253 MMP VOR to Missed Approach holding pattern. Hold on RDL 253 MMP VOR (inbound TR 073°) between 12NM and 16NM MMP DME with right turns.

REMARK: Missed approach obstacle clearance is provided by 2.5% gradient; 5% gradient until 2000 ft is required to overfly Vergiate ATZ. Pilots unable to comply with this gradient are advised that will fly within airspace classified "G".



MMP DME										MMP DME									
OCA (OCH)		A	B	C	D	<div>CIRCLING SECTORS</div> <div></div>	FT PER MIN	GS	FAP-THR 7.08 NM	DIST THR 35L	ALT (HGT)	MNM SECT ALT 25 NM ARP							
STRAIGHT IN APPROACH	LPV	1120 (424)	1132 (436)	1140 (444)	1151 (455)		850	160	2 : 39	7 6	2977 (2281) 2658 (1962)	<div></div>							
	LNAV/VNAV (4)	1120 (424)	1132 (436)	1140 (444)	1151 (455)		740	140	3 : 02	5 4	2340 (1644) 2022 (1326)								
	LNAV	1250 (554)					635	120	3 : 32	3 2	1703 (1007) 1385 (689)								
	CIRCLING	1450 (682)		1650 (882)	1710 (942)		530	100	4 : 15										
							425	80	5 : 19										

TABULAR DESCRIPTION

RNP RWY35L – Instrument Approach Procedure

Serial Number	Path Terminator	Waypoint Identifier	Fly Over	Course °M(°T)	Magnetic Variation	Distance (NM)	Turn Direction	Altitude (ft)	Speed Limit (kt)	VPA (°)/TCH (m)	Navigation Specification
010	IF	INLER	-	-			-	+4000 (1)	AT190	-	RNAV 1
020	TF	EKPOP	-	343 (345.9)	-	4.0	-	+3000	180	-	RNAV 1
030	TF	MC701	-	346 (349.0)	-	4.0	-	+3000	170	-	RNP APCH
040	TF	RWY35L	Y	346 (349.0)	-	7.1	-	@745(2)	-	3.0/15.0	RNP APCH
050	CF	MC706	Y	346 (349.0)	3	-	-	+1520	200	-	RNP APCH
060	CF	MC707	-	253 (256.0)	3	-	L	+4000	200	-	RNAV 1

(1) +3000FT ATC discretion

(2) THR Altitude plus TCH; for MA transition the value is according to the minima LNAV or LNAV/VNAV

HOLDING IAF - RNAV 1

Path Terminator	Waypoint Identifier	Inbound Course °M (°T)	Leg Distance (NM) (1)	Timing(min.)/ Waypoint Distance (NM) (2)	Turn Direction	Minimum Altitude (FT)	Maximum Altitude (FL)	Speed Limit (kt)	Magnetic Variation (°)	Navigation Specification
HM	INLER	356 (359.0)	3.5	1.0/ -	R	+4000	-	190	3	RNAV1

(1) RNAV system with holding functionality

(2) RNAV system without holding functionality

HOLDING MISSED APPROACH - CONVENTIONAL

Path Terminator	Waypoint (FIX)	Inbound Course °M (°T)	Navaid	Outbound leg	Turn Direction	Minimum Altitude (FT)	Maximum Altitude (FL)	Speed Limit (kt)	Magnetic Variation (°)	Navigation Performance
HM	MC707 (RDL253/12NM)	073 (076.0)	MMP VOR/DME	Not exceed 16NM DME	R	+4000 (1)	-	200 (1)	1.0	Conventional

(1) MHL 75 or TRANSITION LEVEL IF HIGHER (IAS MAX 280 KT)

WAYPOINT LIST

Waypoint Identifier	Coordinates
MC701	45°29'54.70" N 008°45'33.29" E
MC706	45°39'48.60" N 008°42'49.44" E
MC707	45°35'31.53" N 008°27'31.18" E

SBAS FAS DATA BLOCK LIMC RNP RWY35L

INPUT DATA	
PARAMETERS	VALUES
Operation Type	0
SBAS Provider	1
Airport Identifier	LIMC
Runway	35
Runway Direction	3
Approach Performance Designator	0
Route Indicator	
Reference Path Data Selector	0
Reference Path Identifier	E35E
LTP/FTP Latitude	453651.8645N
LTP/FTP Longitude	0084338.3045E
LTP/FTP Ellipsoidal Height (metres)	257.4
FPAP Latitude	453843.6325N
Delta FPAP Latitude (seconds)	111.7680
FPAP Longitude	0084307.4120E
Delta FPAP Longitude (seconds)	-30.8925
Threshold Crossing Height	50.0
TCH Units Selector	0
Glidepath Angle (degrees)	3.00
Course Width (metres)	105.00
Length Offset (metres)	0
HAL (metres)	40.0
VAL (metres)	50.0

OUTPUT DATA	
Data Block	10 03 0D 09 0C E3 00 00 05 35 33 05 31 59 93 13 81 CF BE 03 0E 1E 30 69 03 A7 0E FF F4 01 2C 01 64 00 C8 FA D9 24 74 E9
Calculated CRC Value	D92474E9

REQUIRED ADDITIONAL DATA (NOT CRC WRAPPED)	
These additional data are not required for CRC calculation, but they need to be provided to datahouses for procedure coding in ARINC 424 records.	
ICAO Code	LI
LTP/FTP Orthometric Height (metres)	212.2
FPAP Orthometric Height (metres)	232.9

Intenzionalmente bianca

Intentionally left blank